

essence

MEDIA INFORMATION

- **6,500** copies
- reach high net worth households and individuals
- **65,500** website page views*
- **131,600** website hits*

READERSHIP c 80,000

* LAST 3 MONTH AVERAGE

essence magazine is a leading lifestyle publication delivering a unique mixture of both national and local names to its readers.

essence has an established reputation for high quality design and editorial. The magazine contains must read articles and commentary, together with a comprehensive local theatre, arts and entertainment guide.

Print 4,000 copies

- Royal Mail posting to all key private estates, including St George's Hill and Wentworth.
- Available in each of esa's apartments (Executive Serviced Apartments) at 17 locations throughout the south-east .
- Local Letterbox distribution, including estate agents, doctors, dentists, hotels, restaurants, and other service businesses.
- Distribution to selected London apartments, City businesses, hotels and Heathrow airport lounges (bulk distribution associate ABC accredited)

Digital 2,500 copies

- Reaches GU, KT, & TW households having annual income above 100k, over 88% of households valued at over £1.5m.
- Compiled from "opt in", factual, transactional data vetted and cleansed monthly (digital).

Website & Social Media

- Over 7,350 twitter followers and 65,500 monthly page views, regularly updated with carefully selected content.



essence

MAGAZINE ADVERTISING

• Quarter page - Artwork size : h 118mm x w 85.5mm	£295
• Half page vertical - Artwork size : h 240mm x w 85.5mm	£545
• Half page horizontal - Artwork size : h 118mm x w 176mm	£545
• Full page - Trim size : h 275mm x w 210mm bleed size*	£995
• Outside back cover - Trim size : h 275mm x w 210mm bleed size*	£1,725
• Inside front cover - Trim size : h 275mm x w 210mm bleed size*	£1,565
• Inside back cover - Trim size : h 275mm x w 210mm bleed size*	£1,495
• Double-page spread - Trim size : h 275mm x w 420mm bleed size**	£1,555
• Inserts from £35/1,000 copies dependent on size	

* Please add 5mm bleed to all edges when supplying advertising with a bleed area. Also please centre adverts on each PDF supplied.

** Please supply DPS adverts as two single page PDF's, both with 5mm bleed on all edges. Also please centre page adverts on each PDF supplied.

Prices shown for single insertions, discounts available on series bookings. All rates exclusive VAT and for colour display advertisements.

WEBSITE & DIGITAL ADVERTISING

All website advertising banners are sold on a first come first service basis. Prices on application.

ESSENCE CONTACTS

Editorial and production:

Email: editor@essence-magazine.co.uk

Telephone: 01932 988677

Advertising:

Email: debbie@essence-magazine.co.uk

Telephone: 07836 565699

Email: jane@essence-magazine.co.uk

Telephone: 01932 834900

General enquiries:

Email: tracey@essence-magazine.co.uk

Telephone: 01932 834900

Events:

Email: linda@domino4.co.uk

Telephone: 01932 988677



essence

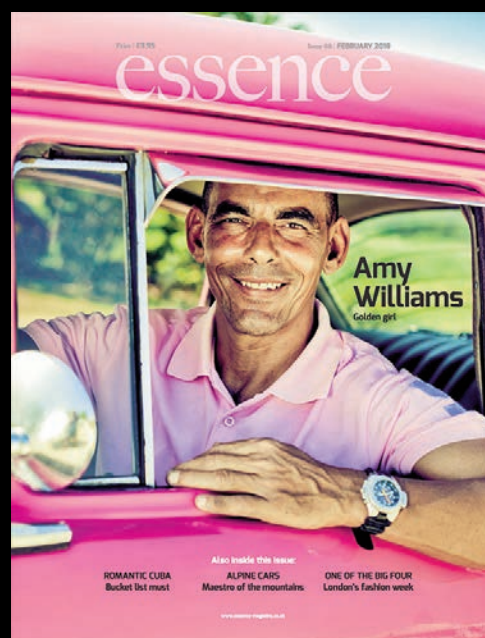
SURREY POSTCODE COVERAGE

KT 2 7 Kingston upon Thames (Coombe Hill)
KT 7 0 Thames Ditton
KT 8 9 East Molesey/Hampton Court/Bushy Park
KT 10 0 Claygate
KT 10 8 Esher
KT 10 9 Esher (Blackhills)
KT 11 1 Cobham (Seven Hills)
KT 11 2 Cobham (Fairmile/Burleigh Park)
KT 11 3 Stoke D'Abernon
KT 12 1 Walton-on-Thames (Ashley Park)
KT 12 4 Walton-on-Thames (Burwood Park)
KT 12 5 Walton-on-Thames (Burwood Park)
KT 13 0 Weybridge (St George's Hill)
KT 13 8 Weybridge
KT 13 9 Weybridge (Oatlands Park)
KT 21 1 Ashted
KT 21 2 Ashted
KT 22 0 Oxshott (Crown Estate, Knott Park)
KT 22 8 Fetcham
KT 22 9 Fetcham
KT 23 3/4/9 Bookham
KT 24 5 East Horsley
KT 24 6 West Horsley

TW9 1 Richmond
TW10 6 Richmond/Petersham/Ham

GU 1 2 Merrow/Boxgrove/Bushy Hill
GU 1 3 Pewley
GU 4 7 West Clandon
GU 4 8 Shalford
GU 5 0 Bramley/Wonersh/Shamley Green
GU 7 1 Godalming
GU 25 4 Wentworth/Virginia Water

SL5 9 Sunningdale/Ascot



essence

LONDON DISTRIBUTION

Heathrow Airport lounges

Star Alliance
No1. Traveller
Ethiad
EL Al King David
Malaysia Golden
Air Canada
Virgin Holidays V-Room

Luxury Accomodation

Grand Connaught Rooms
Argyle Hotel
Hilton Euston
(Profile Health & Fitness)
Thistle Kingsley
Hyde Park Radnor
Hyde Park Court
Blandford Hotel
Rose Court Hotel
St Georges Hotel
Park Avenue Belgravia
Crowne Plaza
Club Quarters
Montcalm
Docklands Healthcare
Abilty Place
Discovery Dock East & West
New Providence Wharf
Trinity Tower
Cobalt Point
Lanterns Court
Ontario Tower
Pan Peninsula
Millennium Harbour Development
Fraser Place

Corporate

MC Capital Europe
Nuffield Health Fitness &
Wellbeing Centre
Paddington Central
BDO
British Land
Ultimate Security
Millbank Tower
J.P.Morgan
Ultimate Securities
BNY Mellon Bank
Thomson Reuters
Chadbourne & Parke (London) LLP
Gill Jennings & Every LLP
Bank Of Ireland
SMBC Nikko Capital Markets
Broadgate Estates
BNP Paribas Real Estate
Catlin Group
Lloyd's Of London
artis Europe
Bank of Tokyo-Mitsubishi UFJ
CIBC
Bayerische Landesbank
Herbert Smith LLP
Broadgate Estates

